

FL-2(T) 固定式定值分流器

Interchangeable shunts



用途

该类固定式定位分流器用于扩大仪表测量范围，其额定电流见相应表格，

Application

The interchangeable shunts are used to multiply the measuring range of current of measuring instruments.

主要技术参数

准确度等级：

2~4000A: 0.5级；5000~10000A: I级

环境条件：

-40~+60°，相对湿度≤95(35℃)

耐机械力性能：

能承受加速度为70米/秒²及冲击频率每分钟80~120次6小时的运输颠簸。

过负载性能：

120% 额定电流值，2小时。

电压降：50mV, 60mV, 75mV, 100mV。

负载下发热：

温升变化趋于稳定后，额定电流50A以下不超过80℃。

额定电流50A以上不超过120℃。

Basic specifications

Accuracy class: 0.5 for 2~4000A; 1 for 5000~10000A

Ambient conditions: Temperature: -40~+60℃

relative humidity: ≤95%(at 35℃)

Capacity withstand mechanical force:

It is capable of withstanding the transport bumping at acceleration of 70/s² and shock frequency of 80~120 times/mi for hr.

overrating capacity: 120% of rated current for 2hr.

Voltage drop: 75mV, 50mV, 60mV, 100mV.

Giving out heat when loaded: not be more than 80℃ after temperature rise gets steady: not be more than 120℃ at rated current of over 50A.

特殊要求请在订货时提出

外形尺寸 Dimensions(mm)

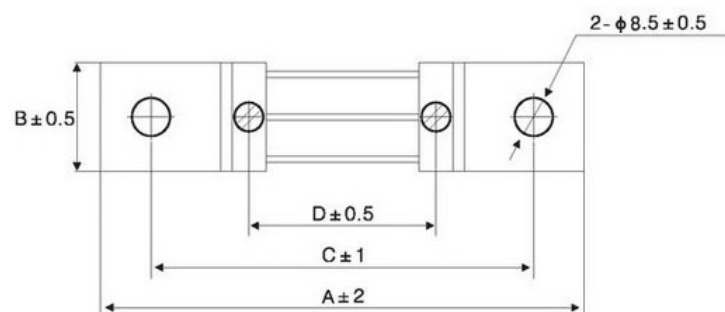
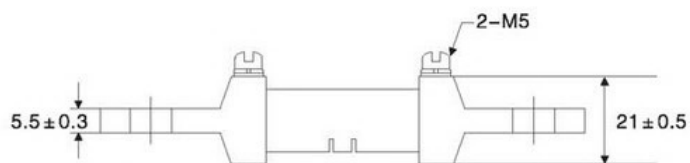
额定电流 (A)	外形尺寸 (mm)															
	100mV				75mV				50mV				25mV			
	A	B	C	D	A	B	C	D	A	B	C	D	A	B	C	D
50	146	22	115	69	116	22	85	39	116	22	85	39	101	22	70	24
100																
200		26	120		126	26	100	49	111	26	85	34	101	26	75	
300																
400		38	120		126	38	100	49	111	38	85	34	101	38	75	
500																
600		45	120		126	45	100	49	111	45	85	34	101	45	75	
750																
1000		62	120		126	62	100	49	111	62	85	34	101	62	75	
1250																
	76	120	126	76	100	49	111	76	85	34	101	76	75			
	96	120	126	96	100	49	111	96	85	34	101	96	75			

FL-2(T) 固定式定值分流器

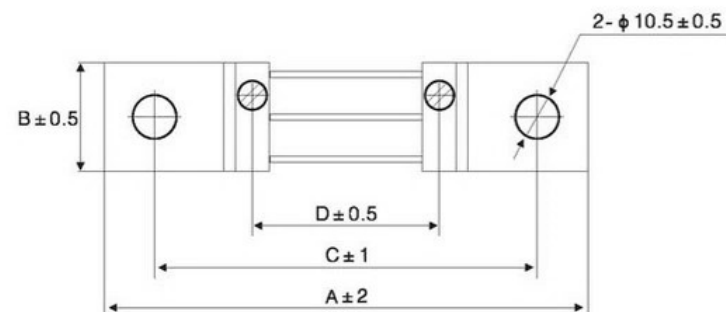
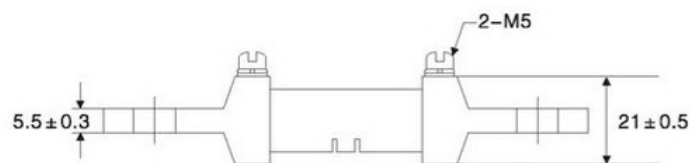
Interchangeable shunts



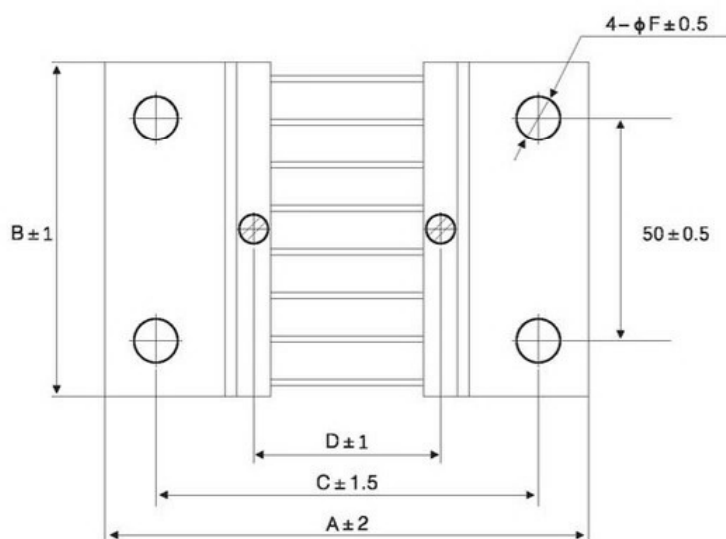
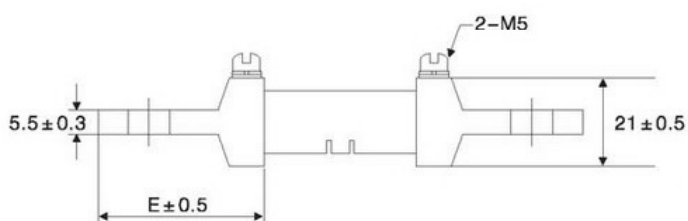
■ 构造图 Construction(mm)



50A~200A



300A~600A



750A~1250A